



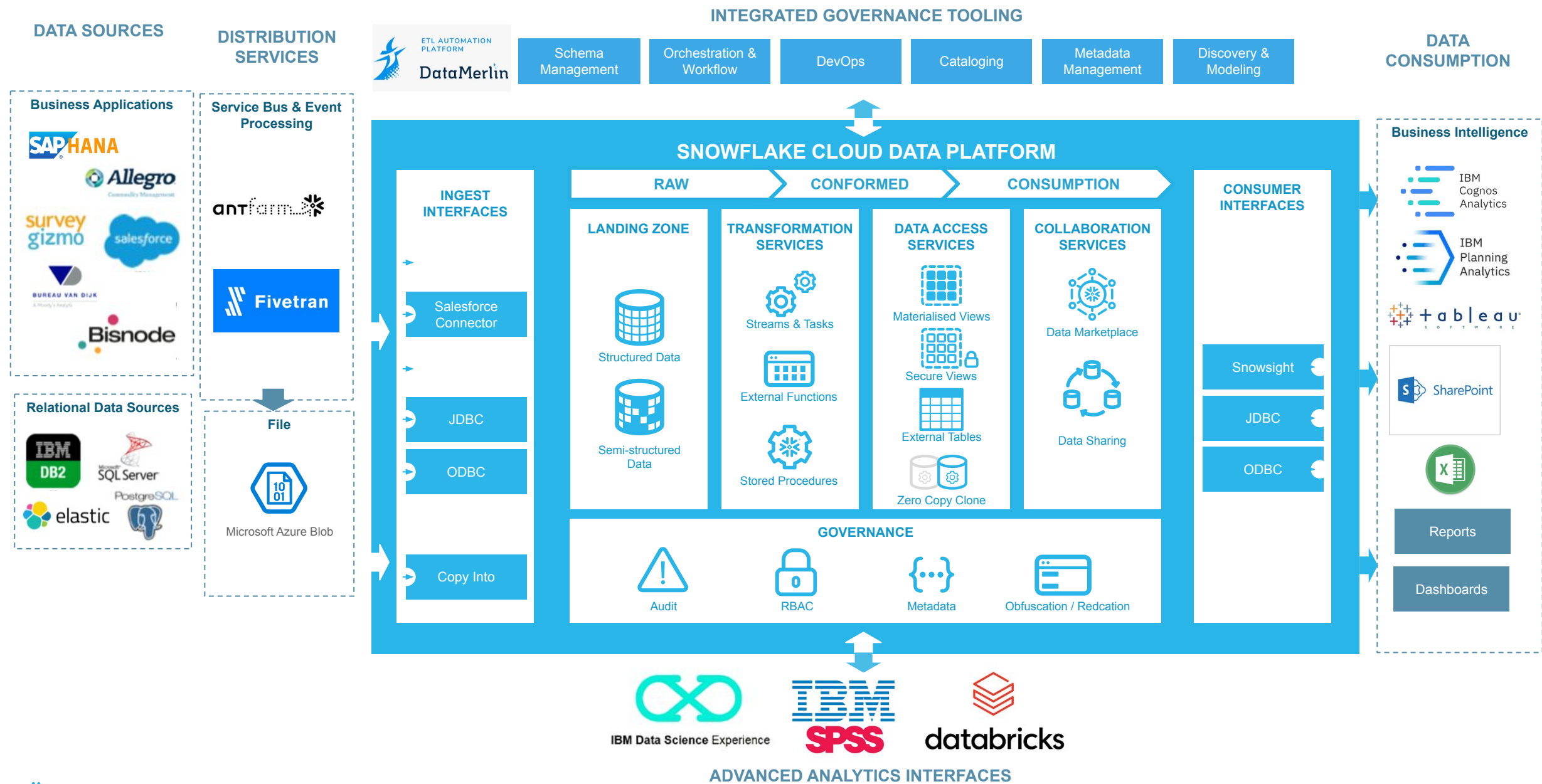
Customer-Centric Data Operations in Energy Retail

SNOWCASE

ARCHITECTURE

Snowflake, IN516HT

REFERENCE LOGICAL ARCHITECTURE



REFERENCE COMPONENT DESCRIPTIONS

antFarm	<i>Lift 'n' Shift data migration solution for fast loading of data from cloud and on-premises data sources into Snowflake.</i>
Fivetran	<i>Cloud ETL tool for Salesforce data integration in Snowflake.</i>
Microsoft Azure Blob Storage	<i>Data storage used by the Snowflake.</i>
DataMerlin	<i>Fast and effective data warehouse automation tool that provides native support for Snowflake with SQL code generation and leverages full ETL / ELT automation.</i>
IBM Data Science Experience IBM SPSS Databricks	<i>Data Science platforms used for advanced analytics that make predictions about future outcomes using historical data combined with statistical modeling, data mining techniques, and machine learning.</i>
IBM Planning Analytics	<i>Financial Performance Management Solutions used to automate and transform planning, reporting and analysis processes. The solutions help anticipate performance gaps, analyze root causes, evaluate alternatives, and enable more effective decision making and implementation.</i>
IBM Cognos Analytics Tableau Excel	<i>BI Reporting tools that allow business users to explore and work with all types of data to make better decisions.</i>

